

## 6930 2Wire SYSTEM SPEAKER/MIC



The new Model 6930 is a Speaker/Mic unit for the ELVOX 2Wire door entry systems capable of handling up to 200 calls and with the facility to be used as a master unit.

The 6930 can be installed in mixed audio/video door entry systems by using concentrator type 692C. Up to 2 analog call pushbuttons can be connected directly to the 6930. Additional call pushbuttons can be added using the supplementary modules 12TS, 805x or 693P.

A model 657C camera can be interfaced with the 6930 to allow for an Audio/Video panel

General Information		Specifications													
<b>Speech unit terminals</b> M VL GROUND VL POWER SUPPLY OF LEDS FOR SUPPLEMENTARY MODULES M GROUND CA DOOR LOCK COMMAND (CONNECT TO "M") B2 2-WIRE BUS B1 2-WIRE BUS S- LOCK OUTPUT S+ LOCK OUTPUT <b>Controls</b> <ul style="list-style-type: none"> <li>EXTERNAL VOLUME</li> <li>INTERNAL VOLUME trimmer</li> <li>VIDEO CAMERA TIME</li> </ul> The TIME trimmer adjusts all 3 parameters at once		<b>Compatible Panels:</b> <ul style="list-style-type: none"> <li>1200 Series 1 or 2 buttons standard and up to 200 stations using 12TS expansion modules</li> <li>8000 Series 1 or 2 buttons standard and up to 200 stations using 8054 expansion modules</li> <li>Patavium Series 1 or 2 pushbuttons standards. Expandable with 693P modules</li> <li>3300 Series 1 or 2 pushbuttons standards. Expandable with 693P modules</li> <li>Any custom built panel up to 200 stations with 693P expansion modules. (657C camera can be added in custom panel to provide AV operation)</li> </ul>													
	<table border="1"> <thead> <tr> <th></th> <th>MIN</th> <th>MAX</th> </tr> </thead> <tbody> <tr> <td>CALL TIME</td> <td>7,5</td> <td>30</td> </tr> <tr> <td>CONV TIME</td> <td>30</td> <td>120</td> </tr> <tr> <td>SELF-START</td> <td>5</td> <td>20</td> </tr> </tbody> </table>		MIN	MAX	CALL TIME	7,5	30	CONV TIME	30	120	SELF-START	5	20		
	MIN	MAX													
CALL TIME	7,5	30													
CONV TIME	30	120													
SELF-START	5	20													

**6930 2WIRE ELVOX COMPACT SPEAKER/MIC MODULE**

### Architects and Engineers Specification

The 6930 shall be a Speaker/Mic unit for the ELVOX 2Wire door entry systems capable of handling up to 200 apartment station with the facility to be used as a master unit.

The 6930 shall be installed in mixed audio/video door entry systems by using concentrator type 692C. The 6930 shall provide for up to 2 analog call pushbuttons standard. Additional call pushbuttons can be added using the supplementary modules 12TS, 805x or 693P.

The 6930 shall be installed in the following entrance panels: • 1200 Series, 8000 Series, 8100 Series, Patavium Series, 3300 Series or any Custom built panel by others. Expansion modules can be wired to ant analog panel to provide up to 200 2Wire station on any analog entry panel.

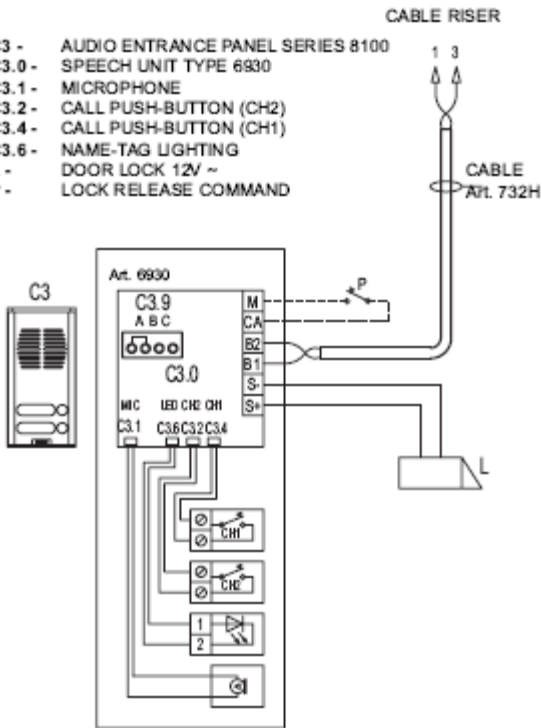
The 6930 shall allow for the inclusion of a camera model 657C converting the entry panel from an audio only to an audio/video panel.

6930

Rev 1.0

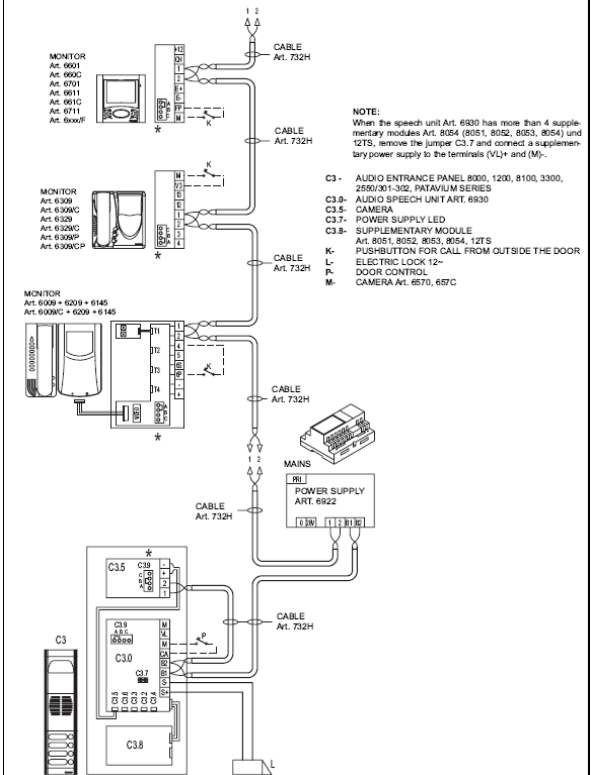
Variation of connection for installation of speech unit "DUE FILI ELVOX" (two wire Elvox) type 6930 in one entrance panel series 8100 (Ref. SI445)

- C3 - AUDIO ENTRANCE PANEL SERIES 8100
- C3.0 - SPEECH UNIT TYPE 6930
- C3.1 - MICROPHONE
- C3.2 - CALL PUSH-BUTTON (CH2)
- C3.4 - CALL PUSH-BUTTON (CH1)
- C3.6 - NAME-TAG LIGHTING
- L - DOOR LOCK 12V ~
- P - LOCK RELEASE COMMAND



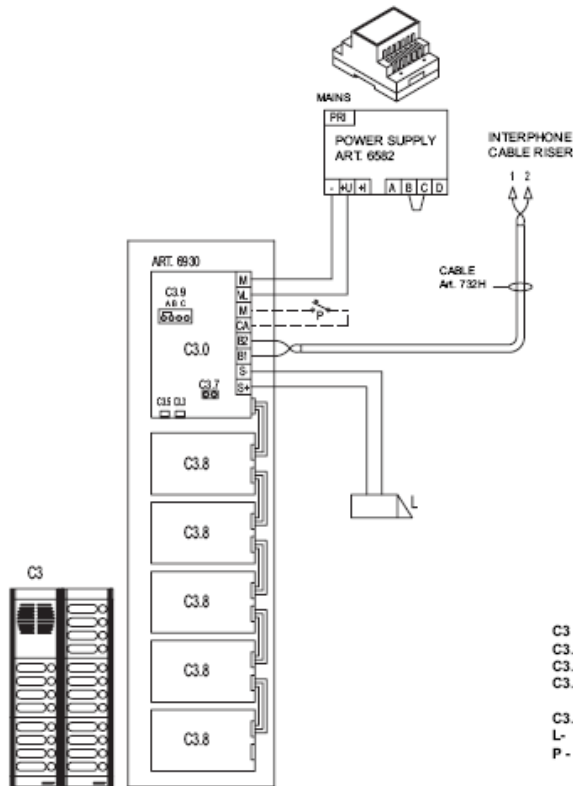
Typical Wiring

VIDEO INTERPHONE ENTRANCE PANEL SYSTEM FOR SINGLE OR MULTI RESIDENCE WITH MONITORS TYPE PETRARCA, GIOTTO, 6600 AND A VIDEO ENTRANCE PANEL (REF. SI527).



Typical Wiring

CONNECTION VARIATION FOR SPEECH UNIT ART. 6930 WITH MORE THAN FOUR SUPPLEMENTARY MODULES ART. 8054 AND SUPPLEMENTARY POWER SUPPLY ART. 6582 (REF. SI433).



Typical Wiring

- C3 - AUDIO ENTRANCE PANEL 8000 SERIES
- C3.0 - AUDIO SPEECH UNIT ART. 6930
- C3.7 - POWER SUPPLY LED
- C3.8 - SUPPLEMENTARY MODULE Art. 8051, 8052, 8053, 8054, 12S SERIES
- C3.10 SUPPLEMENTARY PUSHBUTTON CONNECTOR-
- L - ELECTRIC LOCK 12V~
- P - DOOR CONTROL